

# KAIST Graduate Admissions for International Students



**KAIST**

# Applying to KAIST

## Eligibility

- a. Applicants must hold or expect to hold a Bachelor's degree for Master or Master-Ph.D. Integrated program application or Master's degree for a Doctoral program application by the time of admission.
- b. Applicants must hold citizenship outside Korea.

*\* Korean citizens who hold dual citizenship are not eligible for this track of admission.*

## Yearly Timelines

	Spring	Fall Early Track	Fall Regular Track
Application Term	August - September	December - January	March - April
Decisions Announcement	December	March	June
Admission Date	March	September	

※ The schedules above are subject to change. Please visit our website for details.

## Application Materials

- ✔ Online Application & Statement of Financial Resources printout
- ✔ Two recommendation letters (online)
- ✔ A certified or true copy of the (expected) degree (certificate)
- ✔ A certified or true copy of transcripts
- ✔ A valid score report of the official English proficiency test (see the table below)

iBT	IELTS	TEPS/New TEPS	TOEIC
83	6.5	599/326	720

- ✔ Curriculum Vitae
- ✔ IDs of the applicant and his/her parents
- ✔ A certificate of family relation or an equivalent public document

*\*All materials above must be provided in English. The translation must preferably be done by the issuing institute or the public notary.*

- ✔ Honors & Awards

## Selection Procedures

- ✔ Application review (Graduate Admissions Team)
- ✔ Application review (Student Selection Committees)
- ✔ Interview (if necessary. Student Selection Committees)
- ✔ Final deliberation (higher committee)

## Application Fee

KRW 80,000 by online payment or USD 80 by transfer

# About KAIST

## Location

The KAIST Main Campus and Munji Campus are located in Daejeon City, within the Daedeok Innopolis, the Korean R&D capital, and home to over 1,000 public and private research institutes, universities, and high-tech venture capital companies. College of Business is located in Seoul, the capital of South Korea.

## Bilingual Campus

Our official language of communication with international students on campus and in classrooms is English. More than 80 percent of our courses are provided in English.

## Partner Universities

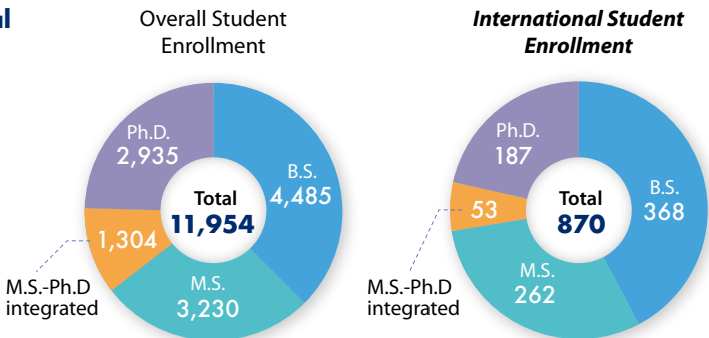
KAIST offers various academic opportunities outside Korea. There are currently 290 partner universities worldwide, and students enjoy exchange programs at TU Delft, Cardiff, ETH Zurich, HKUST, etc.

As a KAIST student, you can study for one or two semesters at an overseas university and earn credit towards your degree through the KAIST Student Exchange Program.

For more information, please visit us with the following QR:



## International Students



# KAIST in the World

QS World University Ranking **Overall**



## QS World University Rankings by Subject 2021



Materials Science and Engineering

**16<sup>th</sup>**



Electrical Engineering

**19<sup>th</sup>**



Mechanical and Aerospace Engineering

**22<sup>nd</sup>**



Chemical & Biomolecular Engineering

**23<sup>rd</sup>**



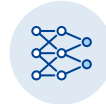
Chemistry

**24<sup>th</sup>**



Computing

**32<sup>nd</sup>**



Civil & Environmental Engineering

**37<sup>th</sup>**



## Facilities

### Campus housing

Incoming students are provided with dormitories on campus. Each room is shared by one or two students and is furnished with beds, closets, desks, and chairs. Residents share bathrooms, laundry rooms, and lounges. Students pay a dormitory fee of around USD 100 per month.

### Library

KAIST has four libraries on campus: Main Library, Undergraduate Branch Library, Munji Campus Library, and College of Business Library. There are 574,120 volumes of books and 19,190 titles of printed and e-journals available in the library (2021. Jan.). KAIST members can also request the library to purchase books related to academic and research interests.

### Medical Service

KAIST Healthcare center cares for minor wounds and illnesses without any charge. For more serious illnesses, KAIST Clinic Pappalardo Center will provide high-quality professional medical service on our campus.

### Sports Facilities

KAIST has excellent facilities for table tennis, tennis, soccer, racketball, badminton, volleyball, and basketball. We also have swimming pools and fitness centers equipped with cycles, treadmills, barbells.

### Restaurants

There are three cafeterias, some fast-food restaurants, and cafes on campus. You will also find numerous restaurants located right outside our campus. KAIST also has an international kitchen. Many of our international students gather at this place to cook and eat together.

### KAIST Language Center (KLC)

KLC offers language courses to improve the Korean and English skills of KAIST students and researchers. All of the classes offered by KLC are non-credit classes, and tuition is charged for each class.

Also, KLC has provided various language-related supports, including language courses, English competency evaluations, and Korean/ English proofreading, interpretation and translation services. Highly competent language experts including proofreaders, interpreters/translators, and lecturers are in place, serving in their field of expertise.

Please visit us with the following QR:



### International Scholar and Student Services (ISSS)

ISSS supports international students with regard to their visa issuance/extension, school registration, housing, and orientation. ISSS also organizes various exciting activities, festivals, and community services.

# Scholarship

## KAIST International Student Scholarship

- Eligibility** International students who apply for KAIST graduate programs  
※ More than 90 percent of our international students to our main campus receive this scholarship
- Subsidies**
- ✔ Full tuition fee waivers: 4 semesters for M.S., 10 for M.S.-Ph.D. integrated, 8 for Ph.D.
  - ✔ Stipends: KRW 350,000/1 month (M.S.) & KRW 400,000/1 month (Ph.D.)  
\* The rate may vary by your research participation.
  - ✔ Monthly health insurance premium
- ※ The coverages and conditions are subject to change.
- Requirements** Students must maintain CGPA over 2.0 out of 4.3 after enrollment to KAIST

## Global Korea Scholarship (GKS) program

- Subsidies**
- ✔ Tuition: Actual cost (up to KRW 5,000,000/semester)
  - ✔ Living expenses: KRW 1,000,000
  - ✔ Airfare: Actual cost
  - ✔ Intensive Korean language training costs
  - ✔ Others: resettlement allowance, medical insurance, research support, printing costs, completion grants
- ※ GKS recipients are required to take one-year Korean language courses in South Korea.

### Application Timetable

Education Level	Application Term	Decisions Announcement	Beginning of Class
Graduate	February	June	September

※ The timeline above is subject to change according to the GKS plan.

### Notes

- ✔ Applicants must check their eligibility and the application track – University/Embassy – with the application guidelines attached to the GKS announcement of the year.
- ✔ Doctoral degree programs integrated with Master's are not available in GKS.

Please learn about the GKS program from the NIIED website.



## Academic Programs

College	Program	M.S.	M.S.- Ph.D	Ph.D
Natural Science	Physics		●	●
	Mathematical Sciences	●	●	●
	Chemistry		●	●
Life Science & Bioengineering	Biological Sciences		●	●
	Graduate School of Medical Science and Engineering		●	●
Engineering	Mechanical Engineering	●		●
	Aerospace Engineering	●		●
	Electrical Engineering	●	●	●
	- The Robotics Program	●		●
	- Future Vehicle	●		●
	School of Computing	●	●	●
	- Graduate School of Information Security	●	●	●
	The Kim Jaechul Graduate School of AI	●	●	●
	Civil & Environmental Engineering	●		●
	- Environmental and Energy Technology Program	●		●
	Bio and Brain Engineering	●		●
	- Brain and Cognitive Engineering		●	
	Industrial Design	●		●
	Industrial & Systems Engineering	●	●	●
	- Graduate School of Knowledge Service Engineering	●		●
	Chemical & Biomolecular Engineering	●		●
	Materials Science & Engineering	●		●
	Nuclear & Quantum Engineering	●		●
	- KINS-KAIST Master's Degree Program	●		
	- RCA-KAIST Master's Degree Program	●		
The Cho Chun Shik Graduate School for Green Transportation	●		●	
Liberal Arts & Convergence	Graduate School of Culture Technology	●		●
	Graduate School of Science and Technology Policy	●		●
Business	Business and Technology Management	●		●
	- Global IT Technology Program	●		●
	Management Engineering	●	●	●
	Techno-MBA	●		
	Finance MBA	●		
	Social Entrepreneurship MBA	●		
	Green Business and Policy Program	●		

※ The offered degrees and programs above are subject to change.  
Please visit our website and read our admission guide for your intended admission cycle.





## Contact

---

### Graduate Admissions Team, Office of Admission

#110, E16-1 building, 291 Daehak-ro, Yuseong-gu, Daejeon,  
Republic of Korea (zip: 34141)

Email\_ [advanced.adm@kaist.ac.kr](mailto:advanced.adm@kaist.ac.kr)

Tel\_ +82-42-350-2352, 2354

Fax\_ +82-42-350-2930